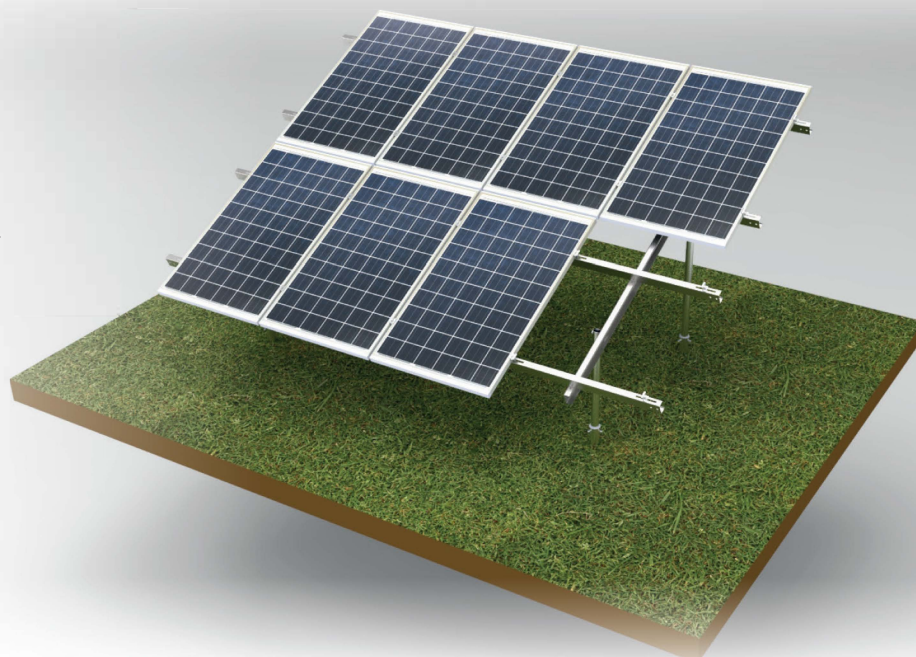
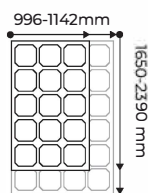


GROUND MOUNTED. DOUBLE SUPPORT.

SYSTEM WS-026

UNIVERSAL SYSTEM SUITABLE FOR MODULES
996-1142 MM WIDE AND 1650-2390 MM LONG



Material:
structural steel with increased durability, hot-dip
galvanized steel.

Anti-corrosion coating: **Magnelis®**

Modules layout:

portrait, 2 rows



Angle: **Index:**

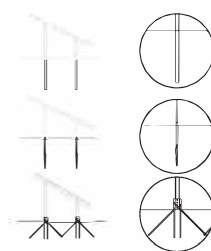
25°-30° XFS_WS026

Installation:

rammed into the
ground

skrews ground

pressing into the ground



- inverter mounting set
- adapted for glass-glass modules
- additional cross-bracings